

## Fact Sheet

*Local Land Services* is a new customer-focussed way of delivering Government-funded agriculture and natural resource management services, advice and information in NSW.

*Local Land Services* will be regionally-based, semi-autonomous, statutory organisations, which are governed by locally elected and skills-based Board members, delivering services for farmers and landowners.

From January 2014, *Local Land Services* will deliver functions currently provided by 13 Catchment Management Authorities (CMAs) and 14 Livestock Health & Pest Authorities (LHPAs) and agriculture advisory services of Agriculture NSW (part of the Department of Primary Industries).

The new *Local Land Services* will deliver:

- agricultural advice;
- plant and animal pest control and biosecurity;
- natural resource management; and
- emergency and disaster assessment and response.

One central *Local Land Services* Board of Chairs will be made up of representatives from each regional organisation and will be accountable to the Minister for Primary Industries.

Each *Local Land Service* will develop operational management plans that will prioritise service delivery on a regional basis, reflecting regional priorities.

Individual *Local Land Services* will be independently audited to ensure accountability and delivery against priorities.

*Local Land Services* will be funded via direct budget contributions from the NSW Government, ratepayer funds and a continuation of natural resource grant funding via the State and Commonwealth Governments.

The Independent Pricing and Regulatory Tribunal will be asked to periodically review the appropriateness of the rating system against services delivered.

An independent Reference Panel will work with community and stakeholder groups to identify how the organisation will best deliver valuable services to the people of rural and regional NSW.

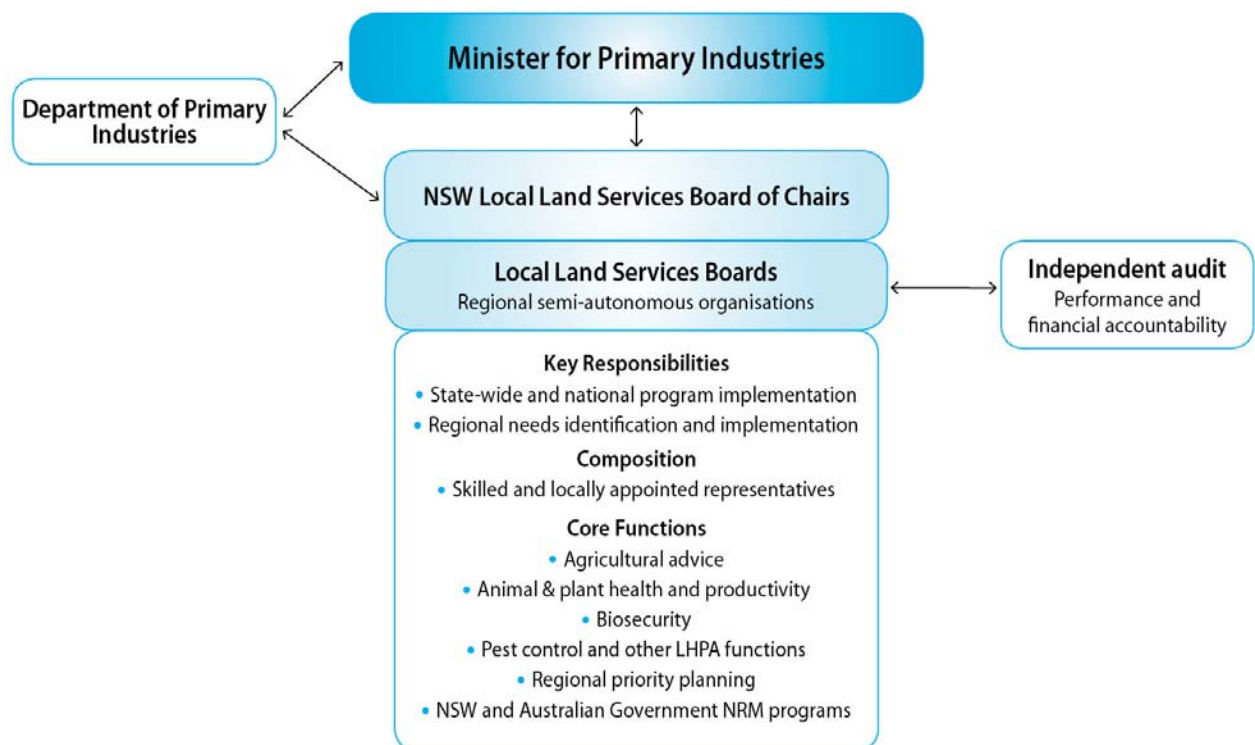
*Local Land Services* will:

- Integrate advisory services;
- Enable strong representation by local service users;
- Reduce administrative costs;
- Improve management of region-specific issues;
- Enhance transparency and accountability; and
- Deliver better outcomes for State and regional priorities.

The new *Local Land Services* will be operational in January 2014.

Landowners will still be able to access existing services from DPI, LHPAs and CMAs in the interim.

## Local Land Services Governance Structure



**More information:** [www.dpi.nsw.gov.au/locallandservices](http://www.dpi.nsw.gov.au/locallandservices)